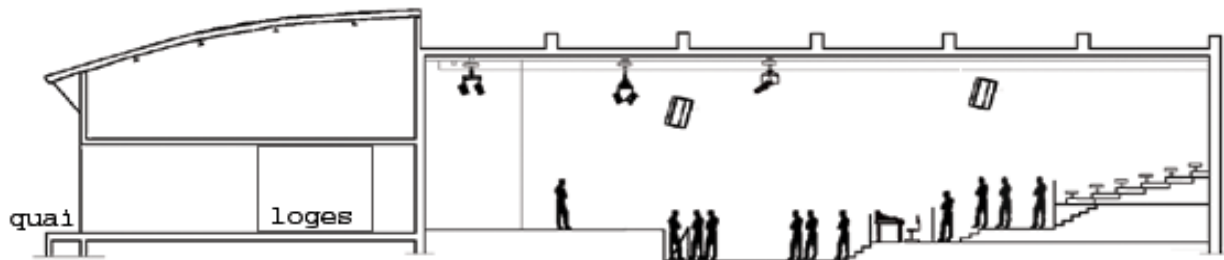


TECHNICAL RIDER june 2018



VENUE :

Capacity : 593 peoples on 4 levels

Stage : 12 meters width, 8 meters depth, 1,10 meter high. The stage floor is black wood

Backdrop black curtain.

6 risers 2 x 1 meters. Different foot size from 20cm to 100 cm high

2 dressing rooms with shower and toilets

There is a limiter in the venue because of the french law (105dB max). It isn't possible to disconnect it.

Please note: French sound laws will change in October 1 2018. It will be 102dB(A) and 118 dB(C) in every point of the venue during an average of 15 minutes. We have the responsibility to make this law respected.

Sound :

FRONT PA :

D&B C7 system :

4 x C7 top

2 x C sub

2 x infra / sub B2

2 x MAX 12 front fill

2 x MAX 12 delayed for the back of the venue

Amp : 6 x D&B D12

FOH :

Mixing desk : Midas PRO2 + DL153 audio system I/O

1 SPX 2000 Yamaha

1 M-ONE TC ELECTRONIC

1 D-TWO TC ELECTRONIC

1 M2000 TC ELECTRONIC

2 E.L. DISTRESSOR

2 DBX 160 A

1 CD player TASCAM CD 01U

MONITORS :

Mixing desk : Yamaha CL3

Wedges : 14 Martin LE 400 (passive)

Amp : 4 x QSC RMX 2450

2 x MAX 15 D&B (sidefills)

Amp : EV Q1212

MICROPHONES & DI :

1 SHURE BETA 52	4 SENNHEISER E 604
1 SHURE BETA 91	2 SENNHEISER BF 609
1 ATM1 AUDIO TECHNICA AE 2500	2 AUDIO TECHNICA AE 3000
6 SHURE SM 58	12 Active DI BSS AR 133
6 SHURE BETA 58	2 Active DI BEHRINGER ULTRA DI 100
6 SHURE SM 57	2 Passive DI L.A. AUDIO
2 SHURE BETA 57	2 Passive DI PRO CO CB 1
2 SHURE SM 81	2 M88
1 SEINNHEISER BF 521	2 AKG SE 300
2 wireless SHURE diversity BETA 58	1 AUDIX D6
15 boom stands, 13 small boom stands	2 AKG SE 300

Please note: in France from September the 11 / 2018 it will be forbidden to use the 700 MHz frequency band, all wireless devices will need to work from 470 MHz to 694 MHz. No others Devices will be accepted in the venue.

LIGHT :

1 M.A. LIGHTING LIGHTCOMMANDER 48/6
1 M.A. LIGHTING GRAND MA II Ultra light V 3.3.4.3
2 dmx lines 5 points
2 ADB EURORACK 60 24 X 3 Kw
1 JULIAT 6 X 3 Kw
1 smoke machine VIPER nt (DMX)
1 fog machine UNIQUE 2 (DMX)
8 Robe Pointe
6 Mac Aura
20 PAR 64 - 1 kw (CP 60 / CP 61 / CP 62)
12 PC – ADB 1 kw
6 PC – ADB 650 w
6 profiles ADB 1 kw
4 T 10
6 FL 1300
6 FUNSTRIP 10
6 LED PAR CHAUVET 18 x 3w RGB + A
2 x d'ACL pars 64
6 cycliodes 1 kw
6 light stands
Colors :
Lee :071/195/132/141/119/106/164/019/027/022/046/116/323/124/139/327/343/181/180/
126/142/101/104/
134/158/100/205/204/201/200/245/219/253/256.
Truss : Width 10 m. Depht 6 m. Clearance 5 m.
Front truss : Width : 9.80 m. Clearance 6.30 m.

DJ :

1 mixer PIONNER DJM 500
2 TECHNIK SL 1200 + Ortofon Concorde DJ S mix/ scratch needles

VIDEO :

2 beemer PANASONIC 4000 lumens
1 screen 4m. X 3 m, 1 screen 6,50m X 3,70m

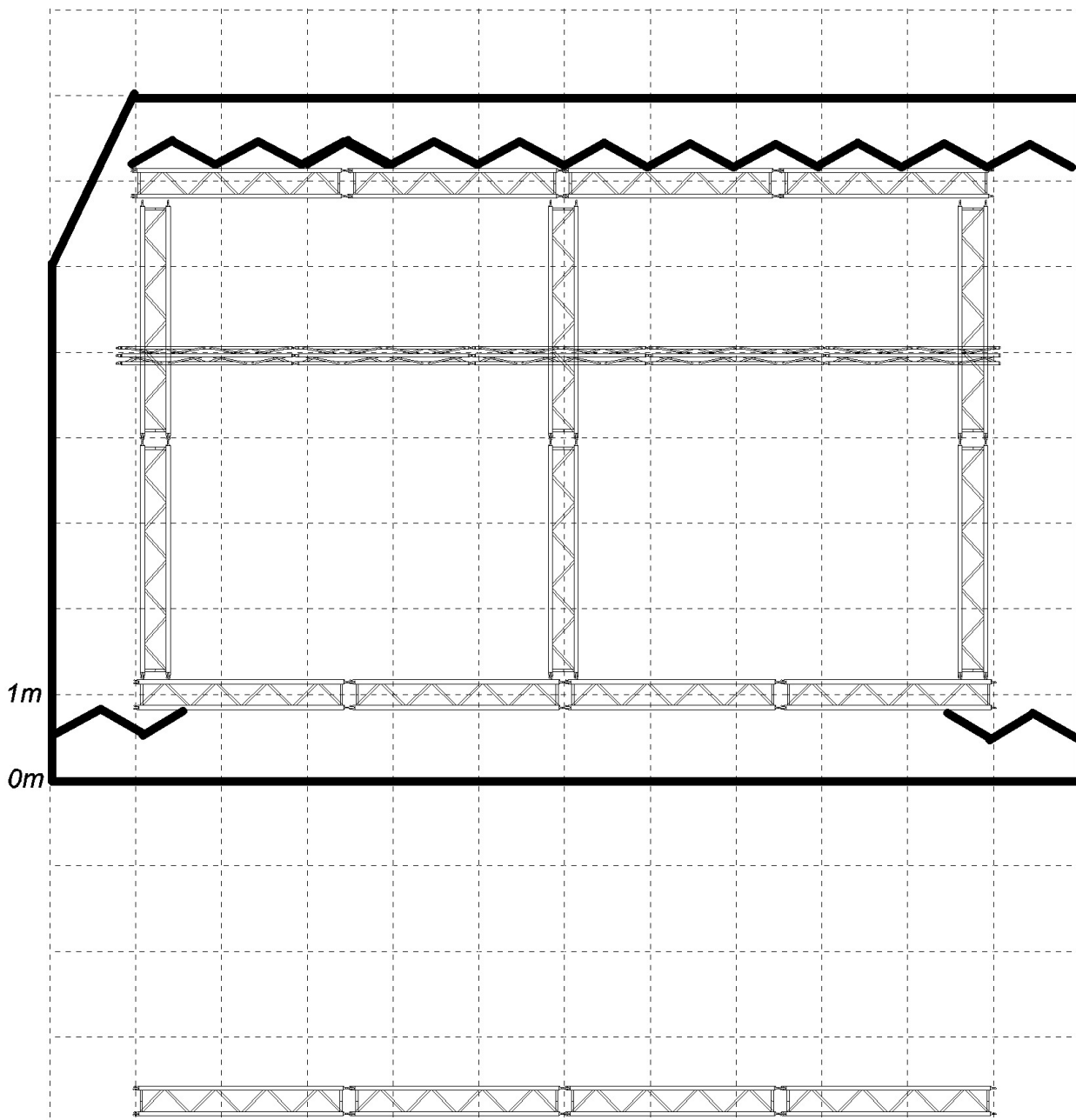
Sound man & stage manager : Thierry : cell :+336/42/54/72/48 Mail :[regie @lesabattoirs.fr](mailto:regie@lesabattoirs.fr)

LES ABATTOIRS WEB SITE : <http://www.lesabattoirs.fr/>

Go for a walk in the venue : <https://my.matterport.com/show/?m=sEsBBVFVuYh>

Stage size is : 12 meters wide / 7 meters depth

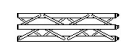
Clearance : 5 meters



LES ABATTOIRS : SCÈNE / GRILL / PENDRILLONS



scène:
12x8m
h:1m



poutre 300mm



poutre 500mm



pendrillons